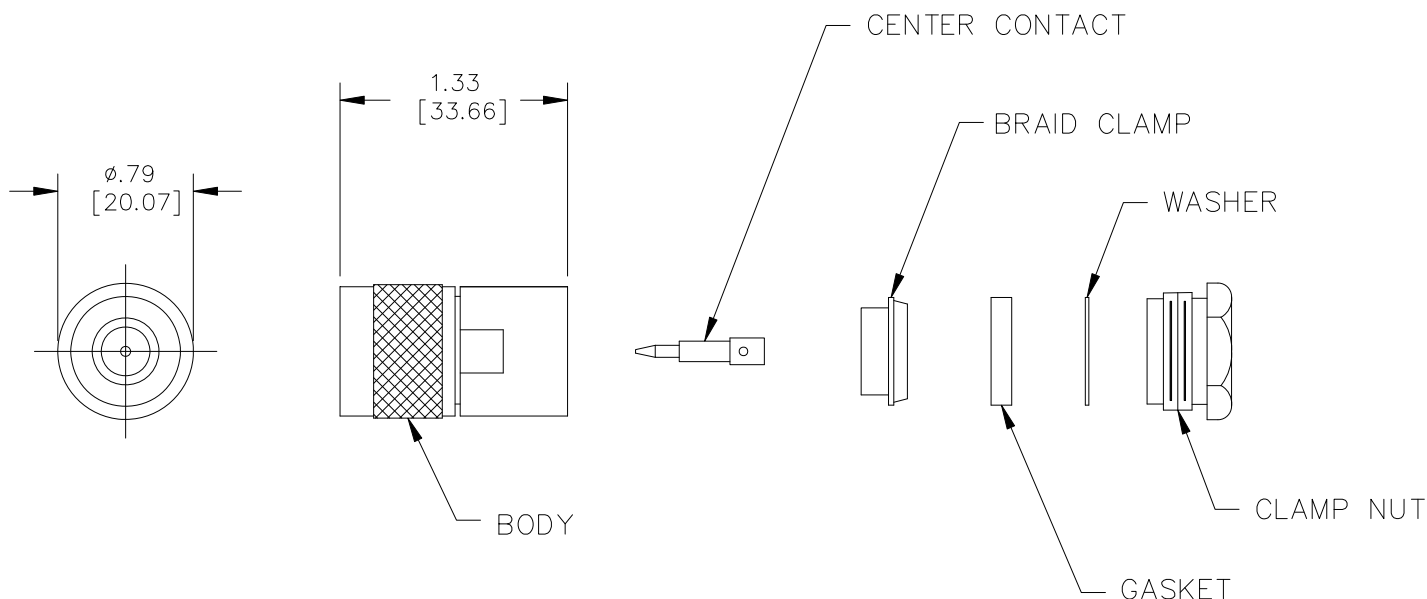


## Model 73062

N Type Plug, 50 Ohm, Clamp Type, RG8, 9, 144, 165, 213, 214, 216, 225



Model 73062  
N Type Plug, 50 Ohm, Clamp Type,  
RG8, 9, 144, 165, 213, 214, 216, 225

### Features

- DC – 11GHz bandwidth.
- Connectors are precision machined.
- Connector accepts cable types RG/U: 8, 9, 144, 165, 213, 214, 216, 225

### Materials

Center Conductor, Male: Brass, Gold Plated  
Connector Body: Brass, Nickel Plated  
Insulator: PTFE

### Specifications

Impedance:	50Ω
Frequency Range:	DC – 11GHz
Contact Resistance:	
Center Conductor:	≤1.0 mΩ
Outer Conductor:	≤0.2 mΩ
Insulation Resistance:	≥ 5000 MΩ
Operating Voltage:	1000V
	<i>For CE compliance, do not hold in hand when voltages exceed 33 Vrms / 70 Vdc.</i>
VSWR:	≤1.35
Number of Insertions:	500 cycles minimum

### Ordering Information

Model: **73062**

USA: Sales: 800-490-2361  
Technical Support: [technicalsupport@pomonatest.com](mailto:technicalsupport@pomonatest.com)  
Fax: 425-446-5844

Europe: 31-(0) 40 2675 150 International: 425-446-5500

Where to Buy: [www.pomonaelectronics.com](http://www.pomonaelectronics.com)

All dimensions are in inches. Tolerances (except noted): .xx = ±.02" (.51 mm), .xxx = ± .005" (.127 mm). All specifications are to the latest revisions. Specifications are subject to change without notice. Registered trademarks are the property of their respective companies.

## Model 73062

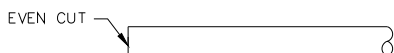
N Type Plug, 50 Ohm, Clamp Type, RG8, 9, 144, 165, 213, 214, 216, 225

### Cable Types

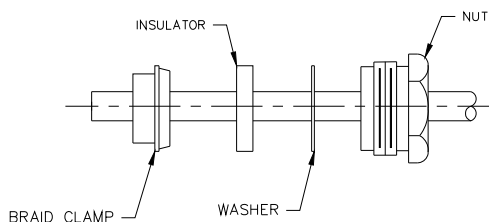
Connector Model #	Cable Groups
73062	RG8, 9, 144, 165, 213, 214, 216, 225

### Cable Assembly Instructions

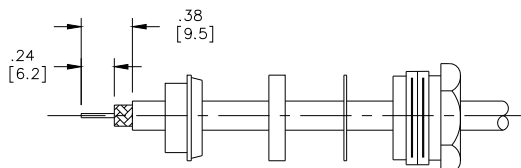
1. CUT CABLE END EVENLY AND PERPENDICULAR



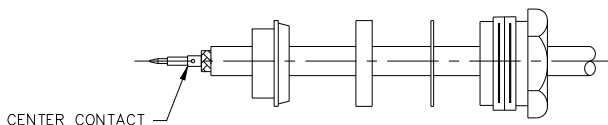
2. SLIDE NUT, WASHER, INSULATOR AND BRAID CLAMP OVER CABLE.



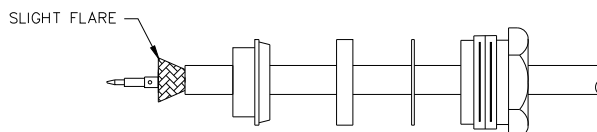
3. STRIP CABLE TO DIMENSIONS SHOWN.



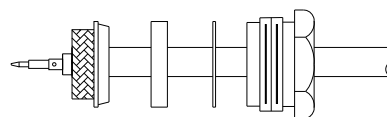
4. CRIMP CENTER CONTACT ONTO CENTER CONDUCTOR.



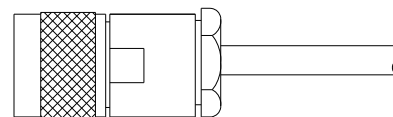
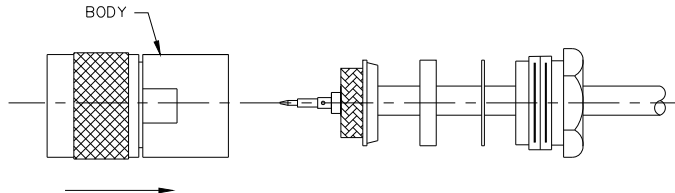
5. FLARE BRAD END SLIGHTLY.



6. SLIDE BRAID CLAMP FORWARD AND COMB BRAD OVER BRAID CLAMP.



7. SLIDE CONNECTOR BODY OVER CENTER CONDUCTOR, BRAID CLAMP, WASHER AND SCREW ON NUT.



**USA:** Sales: 800-490-2361  
 Technical Support: [technicalsupport@pomonatest.com](mailto:technicalsupport@pomonatest.com)  
 Fax: 425-446-5844  
**Europe:** 31-(0) 40 2675 150 **International:** 425-446-5500  
**Where to Buy:** [www.pomonaelectronics.com](http://www.pomonaelectronics.com)

All dimensions are in inches. Tolerances (except noted): .xx = ±.02" (.51 mm), .xxx = ±.005" (.127 mm). All specifications are to the latest revisions. Specifications are subject to change without notice. Registered trademarks are the property of their respective companies.